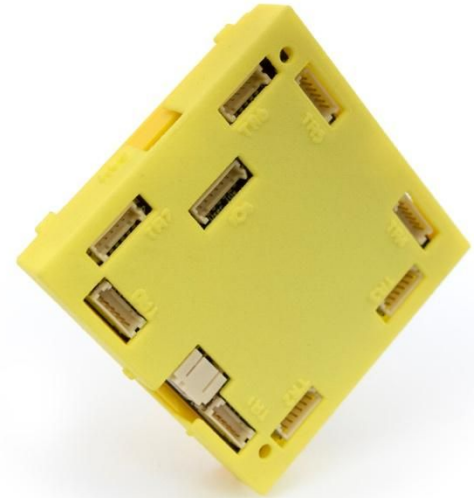


# TeraRanger Distance OSD

by TERABEE 

## The modular, plug n' play solution for multiple distance sensors

This on-screen display for TeraRanger One shows distance values from up to 8 sensors directly on your analog video feed. A graphical user interface for your computer allows you to choose where to display the values, allowing you to place the data according to your choice and other OSD data that you may already be displaying on the video feed. You can also set-up off-set distances and threshold distances. When a threshold distance is breached the distance data for that sensor will display in a flashing mode until the threshold has been re-established. This visual warning system is perfect for drone flight in close proximity to obstacles and for complex landings.



### Technical Specifications:

Protection and mounting:	Use with or without the case. 2 mounting holes for M2.5 screws
Size:	L 56 x W 56 x H 14mm (with case) L 50 x W 50 x H 8mm (without case)
Weight:	15g without the case, 25g with the case
Supply voltage:	12V DC recommended (10-20V DC accepted)
Supply current:	60mA (plus the consumption of each connected TeraRanger sensor) @12V in general environment
Interfaces:	Eight TeraRanger One ports to connect up to eight sensors
	Micro-USB (2.0) for firmware updates and product configuration
	3-Pin Dupont connection video in/out

Supports NTSC and PAL video formats.

### In the box:

- OSD board
- power cable with open ends
- one cable to connect a TeraRanger One to the OSD board (22cm)
- micro-USB (2.0) cable

TeraRanger Distance OSD, sensors and additional cables can be purchased from our online store at:

[www.teraranger.com](http://www.teraranger.com)

Terabee  
90 Rue Henri Fabre  
01630 Saint-Genis-Pouilly  
France

Commercial enquiries: [teraranger@terabee.com](mailto:teraranger@terabee.com)  
Technical after-sales support: [support@teraranger.com](mailto:support@teraranger.com)